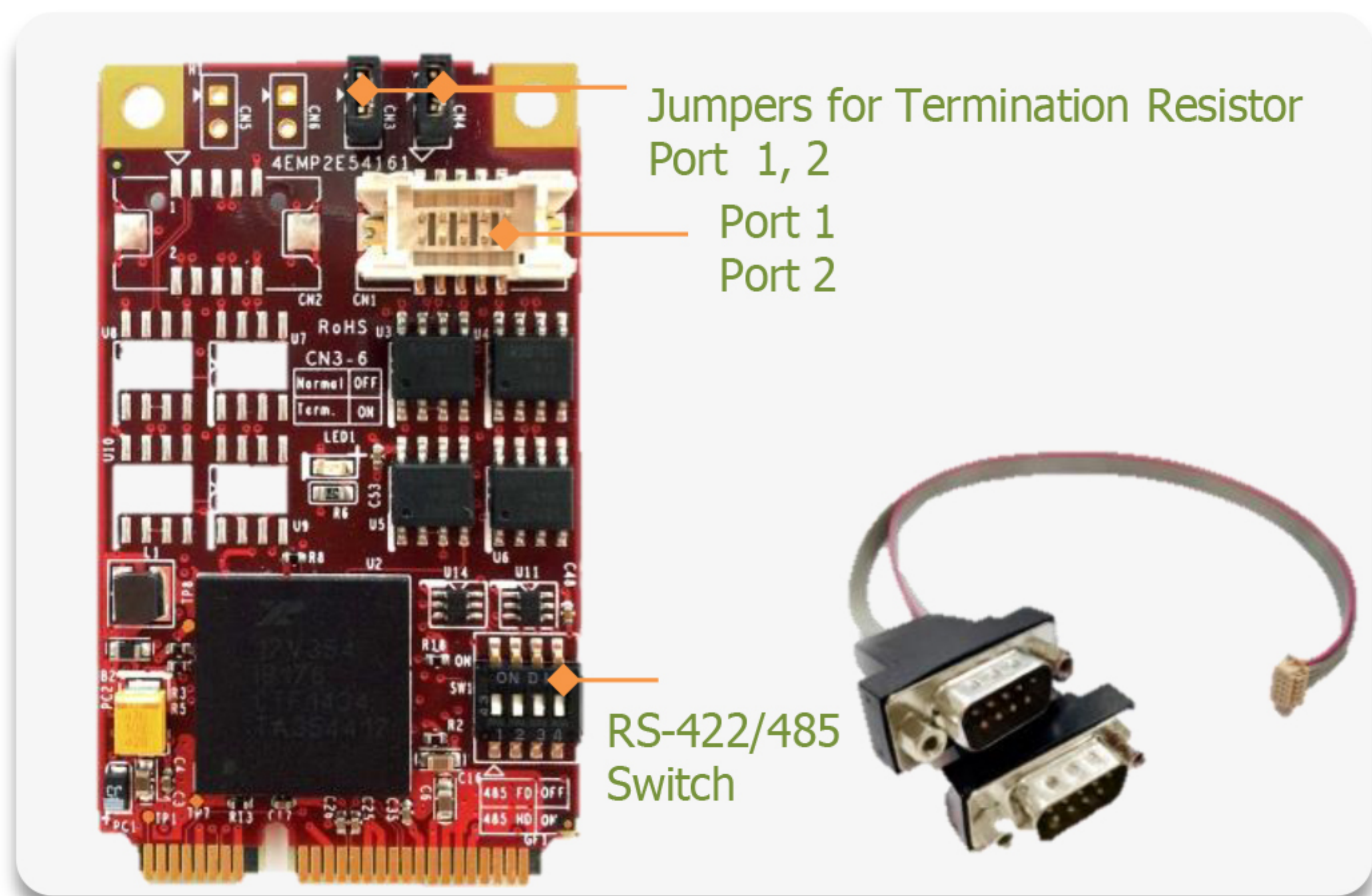


**innodisk**

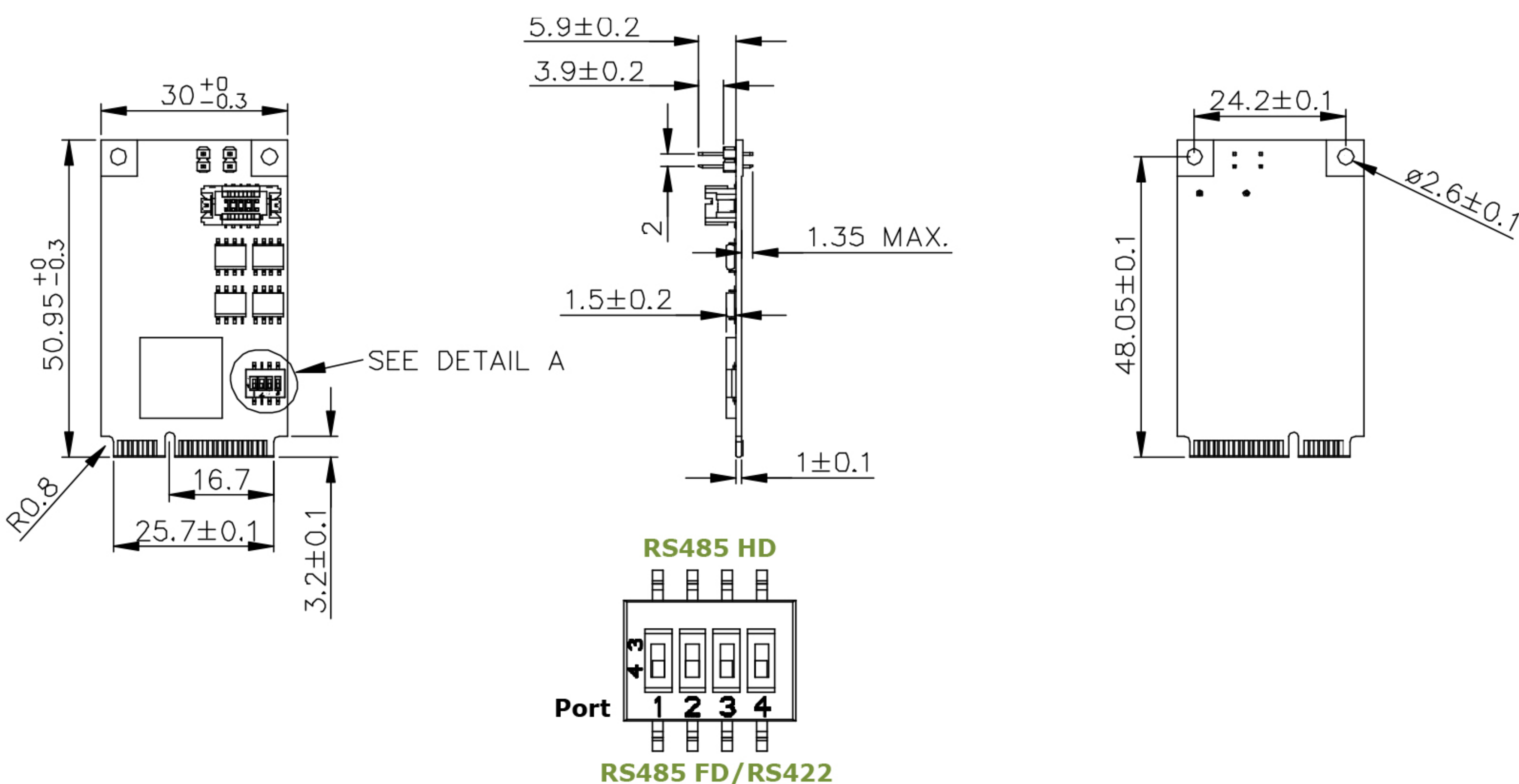
# EMP2-X202 mPCIe to two RS-422/485 Module



## Features

- PCIe 2.0 compliant. RS-422/485 mode configurable by switch. Supports 485HD(Half Duplex) and 485FD(Full Duplex)
- Up to 15 Mbps serial data rate. 16C550 compatible. 256-byte FIFOs
- Industrial temperature(-40 °C to 85 °C) operation.
- Flexible design with DB-9 connectors and cable.
- Termination Resistor by jumper setting.
- ESD up to 15KV(Electrostatic Discharge) protection circuit to prevent system damage.
- 30μ" golden finger, 3-year warranty.
- Industrial design, manufactured in innodisk Taiwan

## Mechanical Drawing



Pin Assignment

RS-485/RS-422 Full duplex	Pin	RS-485 Half duplex
TX-	1	D-
TX+	2	D+
RX+	3	
RX-	4	
GND	5	GND
	6	
	7	
	8	
	9	

## Specifications

Form-Factor	mPCIe
Input I/F	PCI Express 2.0 x 1
Output I/F	RS-422/485
Output Connector	DB-9 x 2
TDP	0.33W (3.3V x 100mA)
Dimension (WxLxH)	30 x 50.9 x 8.25 mm
Temperature	Operation: W/T: -40°C ~ +85°C Storage: -55°C ~ +95°C
Environment	Vibration: 5G @7~2000Hz, Shock: 50G @ 0.5ms
Notes	Please download driver from MyInnodisk website. Windows: XP(32 bit), 7(32/64 bit), 8/8.1(32/64 bit), 10, WES7, CE7.0 Linux: Kernel 2.6.x and above.(We can provide Linux source for modification.)

### Headquarters (Taiwan)

5F., No.237, Sec. 1, Datong Rd., Xizhi Dist., New Taipei City 221, Taiwan

Tel: +886-2-7703-3000  
Email: sales@innodisk.com

### Branch Offices:

**USA**  
usales@innodisk.com  
+1-510-770-9421

**Europe**  
eusales@innodisk.com  
+31-040-3045-400

**Japan**  
jpsales@innodisk.com  
+81-3-6667-0161

**China**  
sales\_cn@innodisk.com  
+86-755-2167-3689

[www.innodisk.com](http://www.innodisk.com)

© 2018 Innodisk Corporation.  
All right reserved. Specifications are subject to change without prior notice.

October 1, 2018

**innodisk**

## Order information

**EMP2-X202-W1(Wide Temp.)**  
mPCIe to 2 x 422/485 Module

[www.innodisk.com](http://www.innodisk.com)